

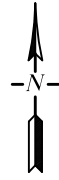
CITY OF JOHN DAY

GRANT COUNTY, OREGON

OCTOBER 2021

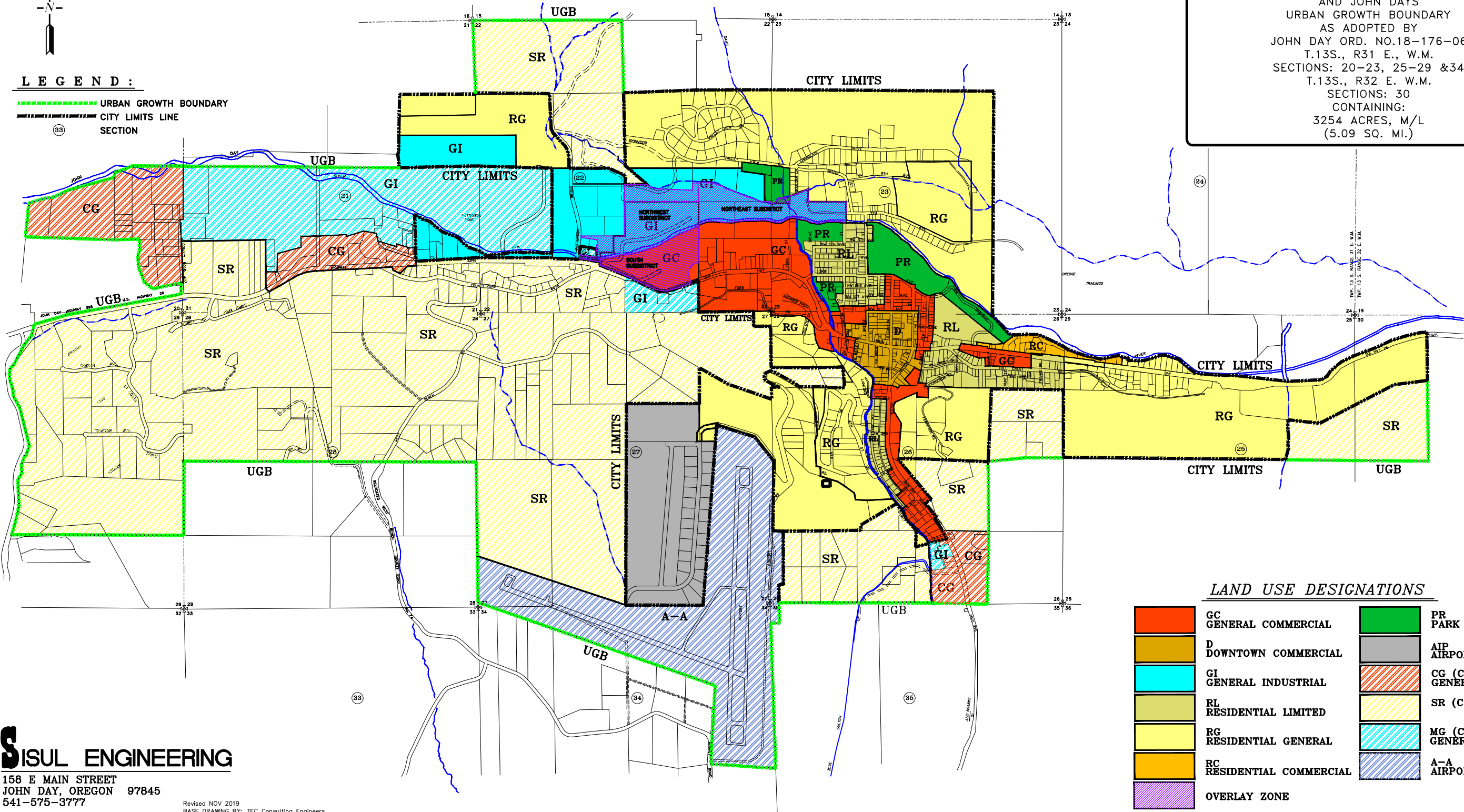
COMPREHENSIVE PLAN/ZONING MAP

THE GRANT COUNTY ENTERPRISE ZONE INCLUDES THE INCORPORATED BOUNDARY OF THE CITY OF JOHN DAY AND JOHN DAYS URBAN GROWTH BOUNDARY AS ADOPTED BY JOHN DAY ORD. NO.18-176-06 T.13S., R31 E., W.M. SECTIONS: 20-23, 25-29 &34 T.13S., R32 E. W.M. SECTIONS: 30 CONTAINING: 3254 ACRES, M/L (5.09 SQ. MI.)



LEGEND :

- URBAN GROWTH BOUNDARY
- CITY LIMITS LINE
- SECTION



LAND USE DESIGNATIONS

<table border="0"> <tr><td style="width: 20px; height: 15px; background-color: orange; border: 1px solid black;"></td><td>GC GENERAL COMMERCIAL</td></tr> <tr><td style="width: 20px; height: 15px; background-color: brown; border: 1px solid black;"></td><td>D DOWNTOWN COMMERCIAL</td></tr> <tr><td style="width: 20px; height: 15px; background-color: cyan; border: 1px solid black;"></td><td>GI GENERAL INDUSTRIAL</td></tr> <tr><td style="width: 20px; height: 15px; background-color: yellow; border: 1px solid black;"></td><td>RL RESIDENTIAL LIMITED</td></tr> <tr><td style="width: 20px; height: 15px; background-color: lightyellow; border: 1px solid black;"></td><td>RG RESIDENTIAL GENERAL</td></tr> <tr><td style="width: 20px; height: 15px; background-color: gold; border: 1px solid black;"></td><td>RC RESIDENTIAL COMMERCIAL</td></tr> <tr><td style="width: 20px; height: 15px; background-color: purple; border: 1px solid black;"></td><td>OVERLAY ZONE</td></tr> </table>		GC GENERAL COMMERCIAL		D DOWNTOWN COMMERCIAL		GI GENERAL INDUSTRIAL		RL RESIDENTIAL LIMITED		RG RESIDENTIAL GENERAL		RC RESIDENTIAL COMMERCIAL		OVERLAY ZONE	<table border="0"> <tr><td style="width: 20px; height: 15px; background-color: green; border: 1px solid black;"></td><td>PR PARK RESERVE</td></tr> <tr><td style="width: 20px; height: 15px; background-color: gray; border: 1px solid black;"></td><td>AIP AIRPORT INDUSTRIAL PARK</td></tr> <tr><td style="width: 20px; height: 15px; background-color: orange; border: 1px solid black;"></td><td>CG (COUNTY) GENERAL COMMERCIAL</td></tr> <tr><td style="width: 20px; height: 15px; background-color: yellow; border: 1px solid black;"></td><td>SR (COUNTY)</td></tr> <tr><td style="width: 20px; height: 15px; background-color: cyan; border: 1px solid black;"></td><td>MG (COUNTY) GENERAL INDUSTRIAL</td></tr> <tr><td style="width: 20px; height: 15px; background-color: blue; border: 1px solid black;"></td><td>A-A AIRPORT APPROACH</td></tr> </table>		PR PARK RESERVE		AIP AIRPORT INDUSTRIAL PARK		CG (COUNTY) GENERAL COMMERCIAL		SR (COUNTY)		MG (COUNTY) GENERAL INDUSTRIAL		A-A AIRPORT APPROACH
	GC GENERAL COMMERCIAL																										
	D DOWNTOWN COMMERCIAL																										
	GI GENERAL INDUSTRIAL																										
	RL RESIDENTIAL LIMITED																										
	RG RESIDENTIAL GENERAL																										
	RC RESIDENTIAL COMMERCIAL																										
	OVERLAY ZONE																										
	PR PARK RESERVE																										
	AIP AIRPORT INDUSTRIAL PARK																										
	CG (COUNTY) GENERAL COMMERCIAL																										
	SR (COUNTY)																										
	MG (COUNTY) GENERAL INDUSTRIAL																										
	A-A AIRPORT APPROACH																										

SISUL ENGINEERING

158 E MAIN STREET
JOHN DAY, OREGON 97845
541-575-3777

Revised NOV 2019
BASE DRAWING BY: TEC Consulting Engineers